

CAD Studio FDO LineStyle

The application CAD Studio FDO LineStyle creates a line style definition for FDO layers from AutoCAD entities. The resulting definition is stored in a XML file. You can use the definition in AutoCAD Map 3D, Topobase Client, AutoCAD Civil 3D, Autodesk MapGuide Enterprise and MapGuide Opensource. For AutoCAD Map and Topobase use enhanced FDO styles.

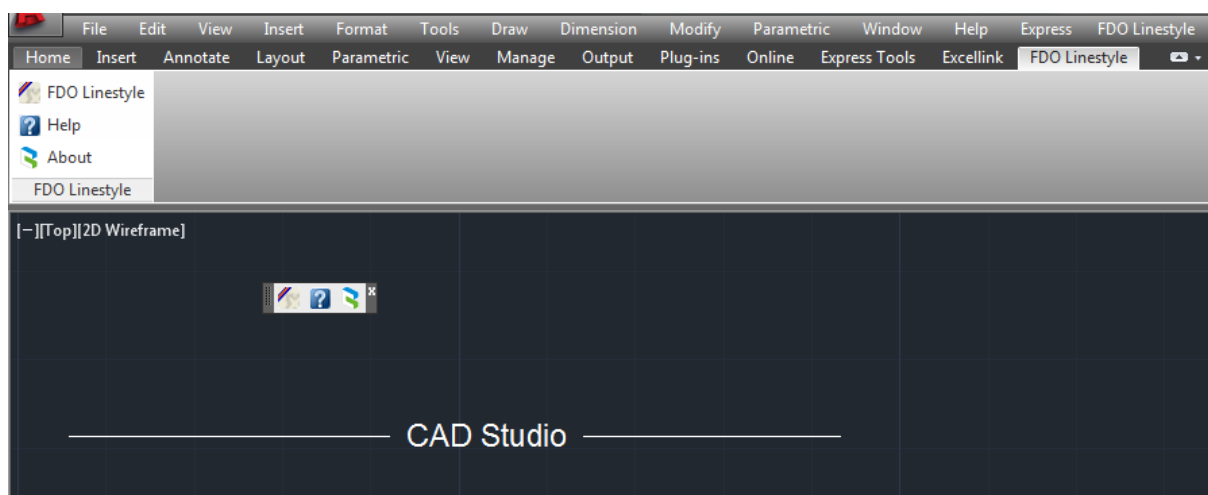
1. Installation

FDO Linestyle 2013 will run on AutoCAD release 2013 and vertical versions of AutoCAD 2013.

Run the FDOLineStyle installer and follow its instructions. Use FDOLineStyle.exe for 32 bit AutoCAD or its vertical version or FDOLineStyle_x64.exe for 64 bit version.

2. Use

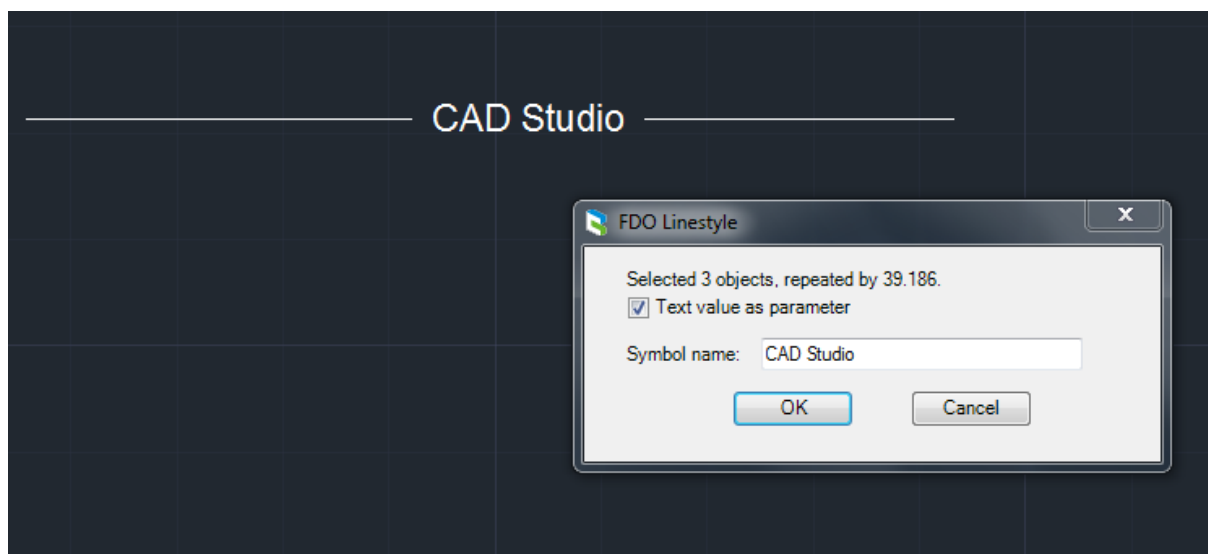
1. Run the application with the **FDOLS** command or with the menu button.



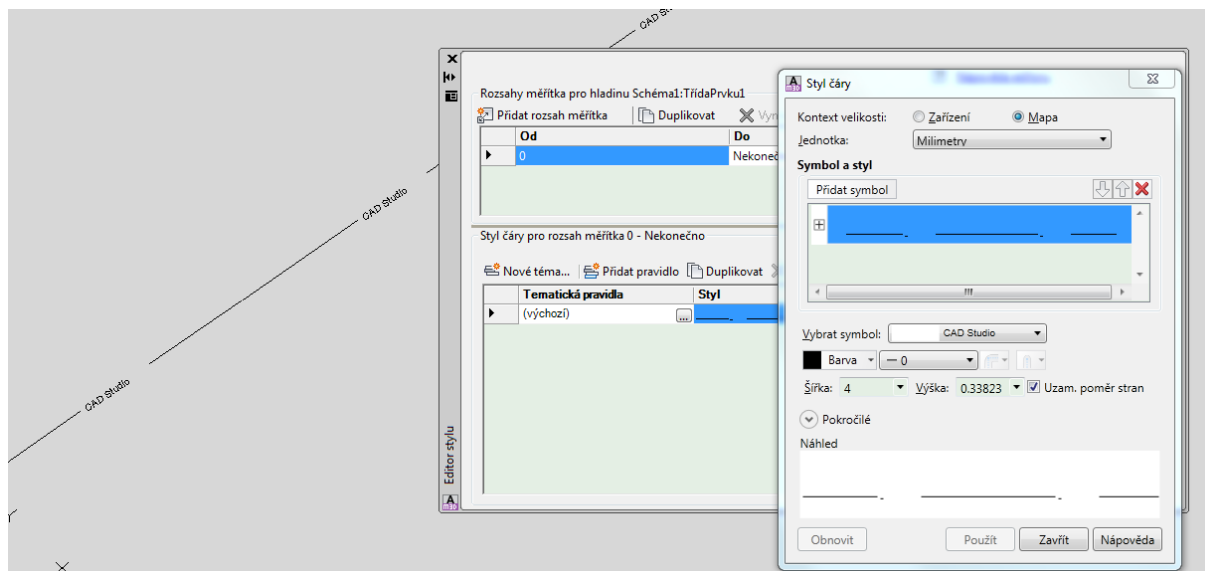
The application will prompt for the start point, end point and the objects for linestyle definition.

Supported AutoCAD entities are: LWPOLYLINE, LINE, ARC, CIRCLE, TEXT. Closed polylines and circles will be filled in the symbol definition. Font is used from text style. Text can be as parameter – check - value can be from expression.

After the entities selection, a form will be displayed where you choose the name of the symbol.



You can import the resulting XML file into a FDO layer definition in Topobase Client or MapGuide. To use it in AutoCAD Map 3D or AutoCAD Civil 3D you need to use result XML for layer definition as described on web [Map 3D and Murphs Law](http://map3d.wordpress.com/2010/01/14/custom-line-types-with-data-connect/) - <http://map3d.wordpress.com/2010/01/14/custom-line-types-with-data-connect/>.



3. Sample data

The installation includes sample data CADSTUDIO.SDF and CADSTUDIO.LAYER.

4. History

See www.cadstudio.cz/fdols for updates

1.0. – March 2010:

- First version
- support for AutoCAD 2010, 2011

1.2 – May 2010

- text as parameter
- font from text style

1.3 – Support for AutoCAD 2012

2013 – Support for AutoCAD 2013

5. License

CAD Studio provides the license for this application free of charge. You can use the application for processing data both in non-commercial and commercial projects.

©2010 - 2013, CAD Studio a.s.

www.cadstudio.cz www.cadstudio.cz

info@cadstudio.cz