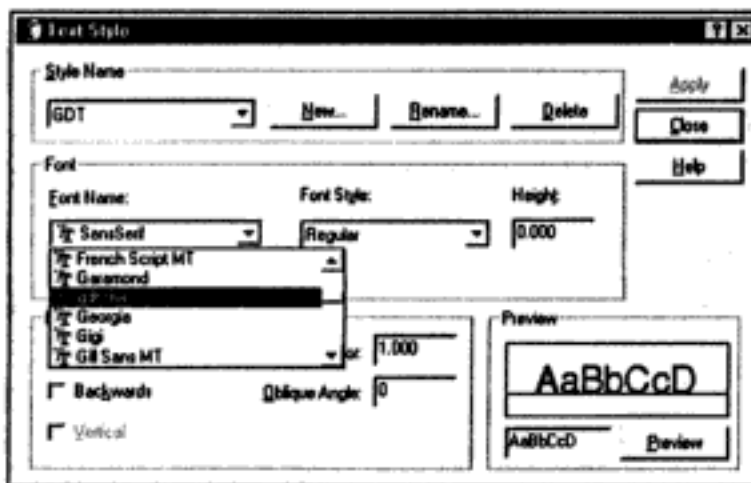


TYPING GEOMETRIC SYMBOLS

If you want geometric symbols in the notes that you place on the drawing, you can easily accomplish this using a **font** named **GDT.SHX**. This **font** will allow you to type normal letters and geometric symbols, in the same sentence, by merely toggling the SHIFT key up and down with CAPS LOCK on.



1. First you must create a new text style using the **GDT.SHX** font.



2. **CAPS LOCK** must be **ON**.
3. Select **DRAW / TEXT / Single Line** or **Multiline**
4. Now type the the sentence shown below. When you want to type a symbol, press the **SHIFT** key and type the letter that corresponds to the symbol. For example: If you want the diameter symbol, press the shift key and the "N" key. (Refer to the alphabet of letters and symbols shown above.)

3X Ø.44 □Ø1.06 ▽.06

Can you decipher what it says?
(Drill (3) .44 diameter holes with a 1.06 counterbore .06 deep)